



100% variable setting of each damper zone allows for more accurate airflow control to each vertical segment of the rack, while allowing for nearly true 100% airflow

Side flow baffle reduces airflow when set to 0%

Free hanging design allows for easy retrofit or removal of damper

SPECIFICATIONS

General Information

- Material – Extruded Aluminum
- Adjustable from top without removing DirectAire panel
- Quarter Turn Adjustment for 0-100% adjustment of damper for each zone
- Drop in fit onto Tate Steel Bolted Stringer system

UNDERSTRUCTURE OPTIONS

- 4' Bolted Stringer Steel System

AIRFLOW PANEL COMPATIBILITY

- DirectAire

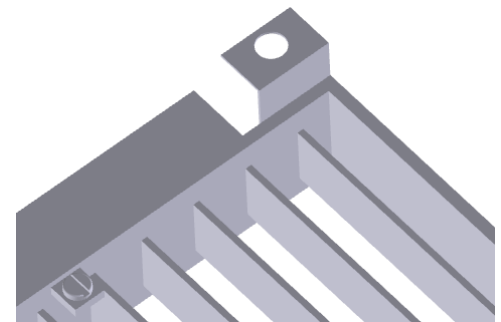
Model 16454

X2 Opposed Blade Damper w/24" DirectAire Panel		
Static Pressure	100% Open (CFM)	0% Open (CFM)
0.02	530	35
0.04	742	40
0.05	835	50
0.06	905	55
0.08	1050	60
0.10	1245	65

*All values are per zone, total flow will be doubled for entire DirectAire



Quarter Turn Adjustment for each zone precise setting of



Support Tabs allow for suspension from pedestal head for panel independent mounting, optional screw down mounting