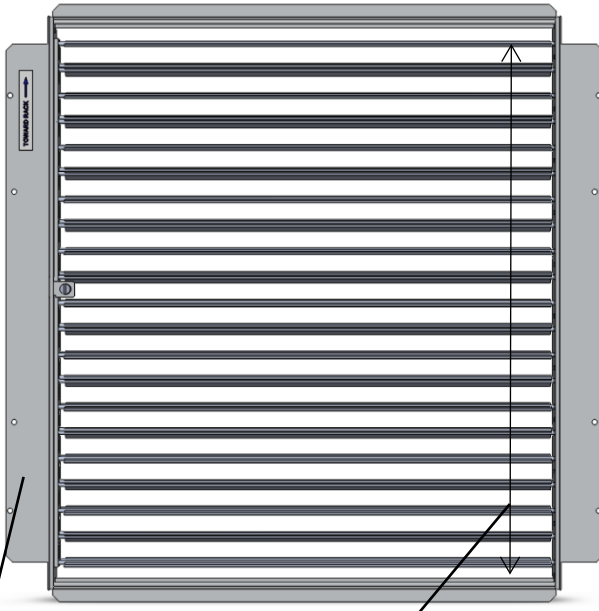
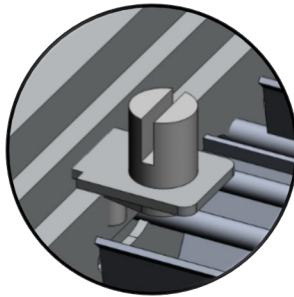


Rack Front Edge

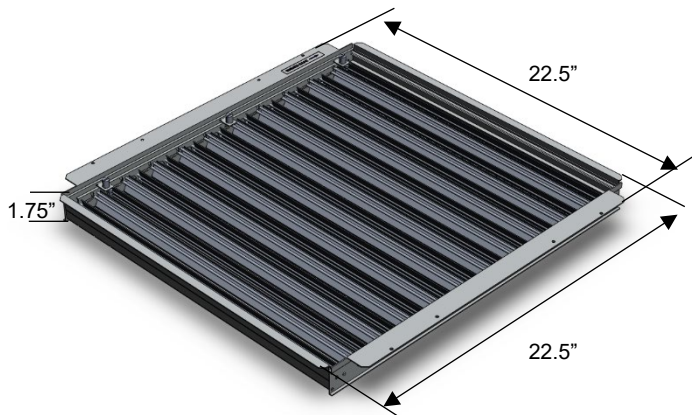


Side Baffles reduce air leakage without pedestal interference

100% variable setting of opposed blades allows for more accurate airflow control, while allowing for nearly true 100% airflow



Quarter-turn damper adjustor accessible through airflow panel



## SPECIFICATIONS

### General Information

- Adjustable from top without removing raised floor panel
- Quarter turn adjustment for 0-100% range of damper
- Field-mounted using self-tapping screws
- Airflow panel-mounted to minimize air leakage between panel and damper
- Supports both 24" and 60cm raised floor systems
- Designed for use with 32% DirectPerf, DirectAire® AI Panels, GrateAire® and HD GrateAire Panels
- Made from anodized extruded aluminum
- Damper Weight: 3.8 lbs. (1.7 kg)
- Dimensions: 22.5" length x 22.5" width x 1.75" depth (57.15 cm length x 57.15 cm width x 4.45 cm depth)

## REQUIRED COMPONENTS

- Torque Limited Screw gun or screwdriver
- Screws for 32% Directional Perf ..... (PN#:11525)
- Screws for DirectAire® AI and GrateAire® (PN#:20701)
- Screws for HD GrateAire® (PN#:11336)

## AIRFLOW PANEL OPTIONS

- DirectAire® AI (24" and 60cm versions)
- 32% DirectPerf (24" and 60cm versions)
- GrateAire® (24" and 60cm versions)
- HD GrateAire (24" version)

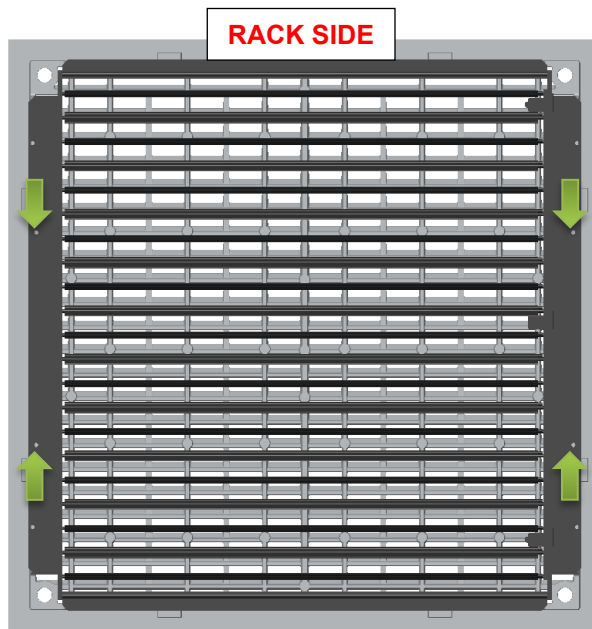
## FINISH OPTIONS

- Clear Anodized Aluminum

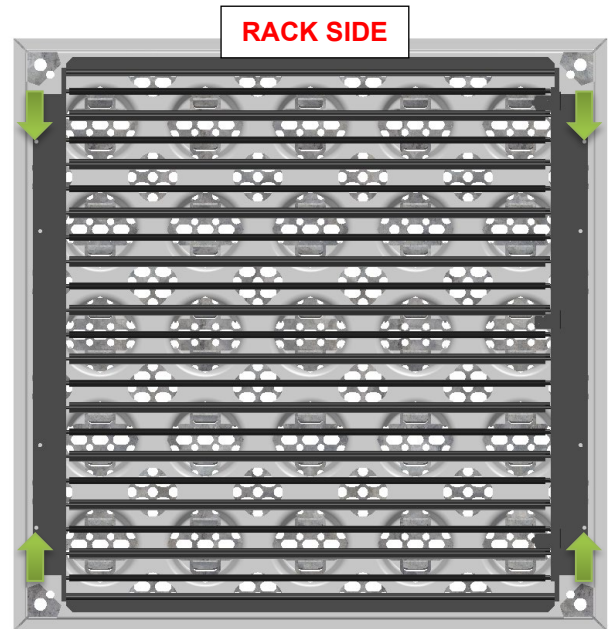
## AIRFLOW PERFORMANCE

Static Pressure (inH <sub>2</sub> O)	Opposed Blade Damper w/ HD GrateAire Panel		Opposed Blade Damper w/ DirectAire® Al Panel		Opposed Blade Damper w/ GrateAire® Panel		Opposed Blade Damper w/ 32% DirectPerf Panel	
	100% Open (CFM)	Closed (CFM)	100% Open (CFM)	Closed (CFM)	100% Open (CFM)	Closed (CFM)	100% Open (CFM)	Closed (CFM)
0.02	890	90	990	110	880	170	505	195
0.04	1290	100	1465	120	1275	185	725	260
0.05	1450	120	1720	145	1400	200	785	280
0.06	1565	145	1750	180	1610	225	875	305
0.08	1760	155	2035	200	1865	260	1125	325
0.10	2075	170	2325	225	2040	310	1250	355

## INSTALLATION



DirectAire® Al



32% DirectPerf, GrateAire® & HD GrateAire

The DirectAire® Al panels utilize the inner 4 holes to mount the Opposed Blade Damper. Please ensure the airflow panel and OBD is oriented correctly in respect to the server rack.

The GrateAire, HD GrateAire and 32% DirectPerf panels utilize the outer 4 holes to mount the Opposed Blade Damper. Please ensure the airflow panel and OBD is oriented correctly in respect to the server rack.