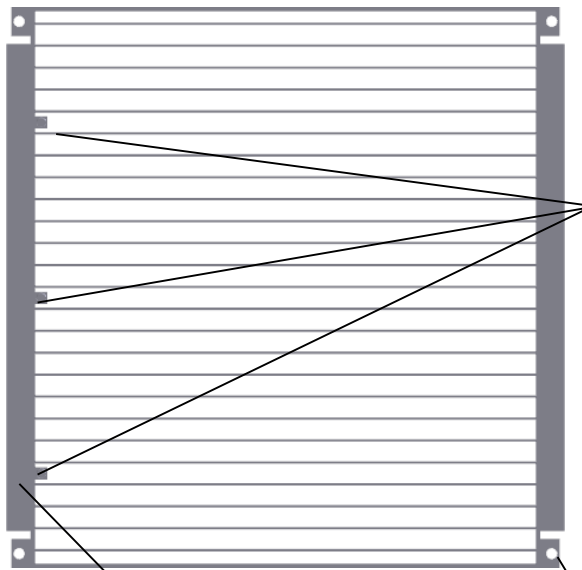


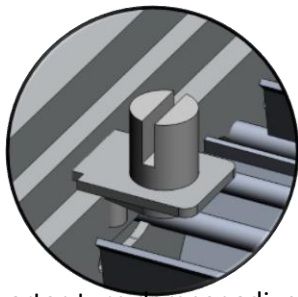
Rack Front Edge



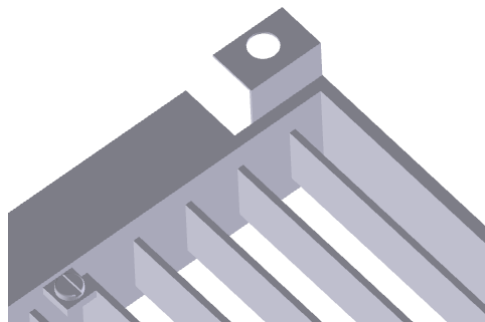
100% variable setting of each damper zone allows for more accurate airflow control to each vertical segment of the rack, while allowing for nearly true 100% airflow

Side flow baffle reduces airflow when set to 0%

Free hanging design allows for easy retrofit or removal of damper



Quarter-turn damper adjustor accessible through airflow panel



Support Tabs allow for suspension from pedestal head for panel independent mounting, optional screw down mounting

SPECIFICATIONS

- Adjustable from top without removing raised floor panel
- Quarter turn adjustment for 0-100% range of damper
- Drop in fit onto 4' Steel Bolted Stringer System
- Designed for use with DirectAire®
- Made from anodized extruded aluminum
- Damper Weight: 3.8 lbs. (1.7 kg)
- Clear Anodized Aluminum Finish

AIRFLOW PANEL OPTIONS

- DirectAire (24" and 60cm versions)

DirectAire Panel with Multi-zone Opposed Blade Damper

Static Pressure	100% Open (CFM)	0% Open (CFM)
0.02	1060	70
0.04	1485	95
0.05	1670	105
0.06	1810	115
0.08	2100	120
0.10	2490	130