

TOP VIEW

SPECIFICATIONS

- Die cast aluminum construction
- Interchangeable with laminated ConCore® and All Steel panels
- 56% open area without damper
- Panel size: 24 inches square
- Panel weight: 7.17 lb./ft²
- Non-combustible material
- Class A flame spread rating

UNDERSTRUCTURE OPTIONS

- 2" deep by 4' bolted stringer system with 8 ga. fillet welded heads

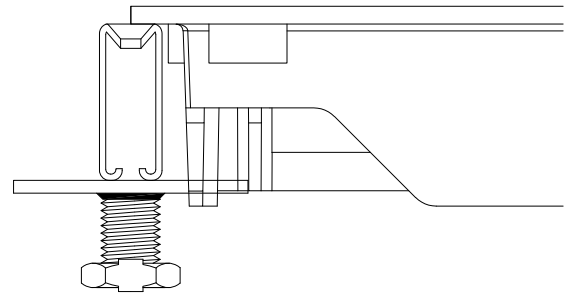
COATING OPTIONS

- Fog Grey anti-static powder coat finish

AIRFLOW CONTROL OPTIONS

- Single-zone Opposed Blade Damper (field mounted)

SIDE VIEW



Airflow Performance

Static Pressure (In. H ₂ O)	Air Volume w/o damper (CFM)
0.02	1055
0.04	1500
0.05	1685
0.06	1875
0.08	2115
0.10	2340

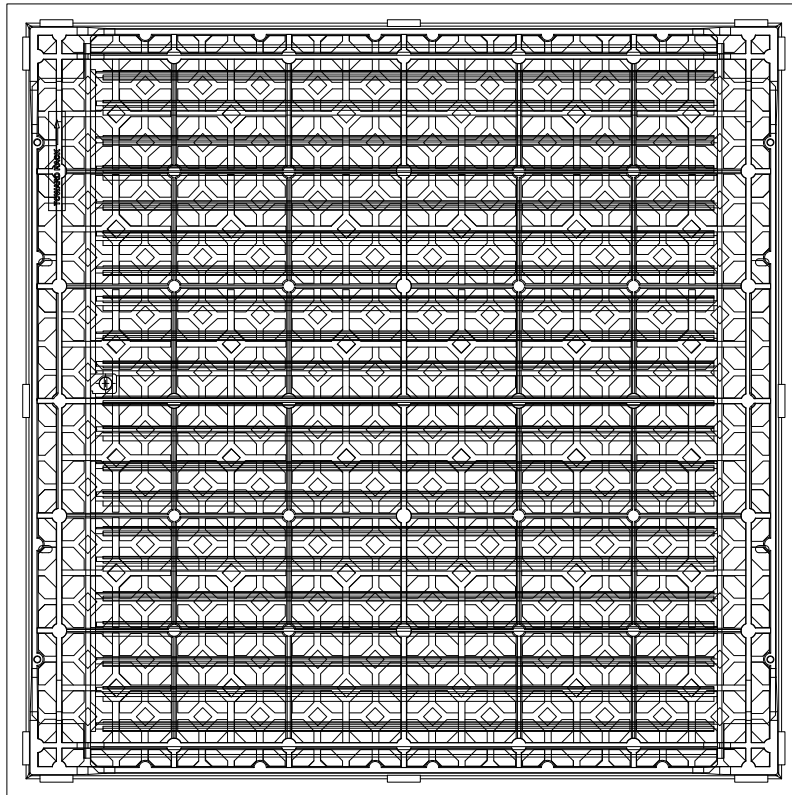
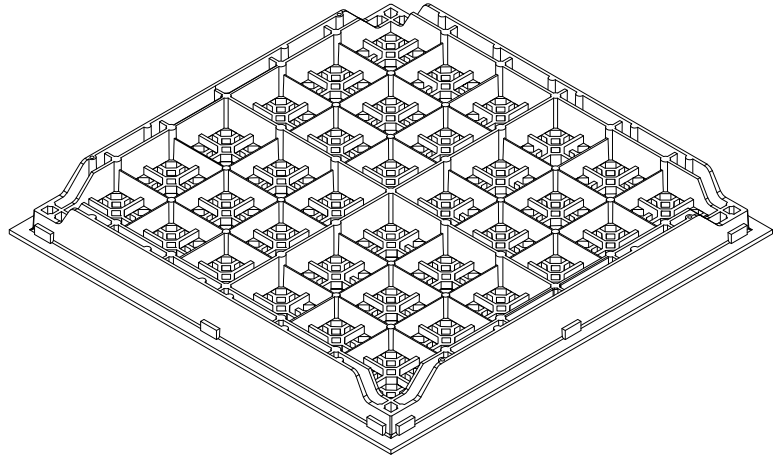
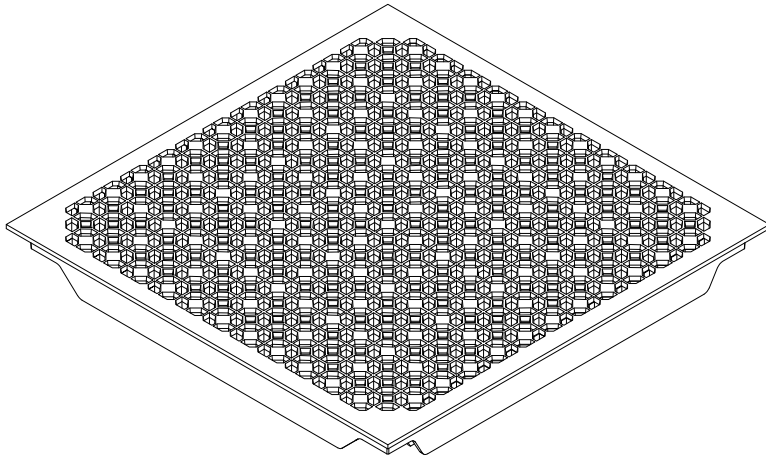
Opposed Blade Damper

Static Pressure (In. H ₂ O)	Air Volume w/ damper open (CFM)	Air Volume w/damper closed (CFM)
0.02	890	90
0.04	1290	100
0.05	1450	120
0.06	1565	145
0.08	1760	155
0.10	2075	170

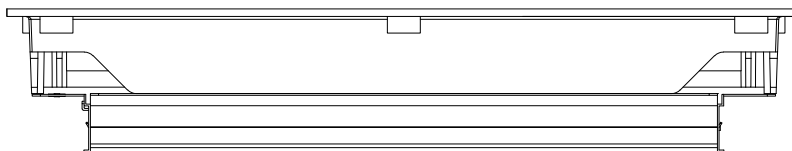
System Load Performance Criteria (Tested on Actual Understructure)*

System Type	Understructure	SYSTEM WEIGHT	STATIC LOADS			ROLLING LOADS		IMPACT LOADS
			Design Loads	Ultimate Load	Safety Factor (min. 1.67)	10 Passes	10,000 Passes	
HD GrateAire Airflow Panel	2" Deep Bolted Stringer	8.46 lbs / ft² 41.31 kg / m²	3000 lbs 1360 kg	5000 lbs 2270 kg	Pass	2700 lbs 1225 kg	2400 lbs 1090 kg	150 lbs 68 kg

1. System Design Load is based on permanent set $\leq .010"$ and is verified by loading panels in accordance with the CISCA concentrated load method but with panels installed on actual understructure instead of steel blocks. Ultimate, Rolling, and Impact Load tests are performed using CISCA test procedures.
2. Safety Factor is Ultimate Load divided by Design Load.



BOTTOM VIEW WITH OPTIONAL FIELD MOUNTED OPPOSED BLADE DAMPER



SIDE VIEW WITH OPTIONAL FIELD MOUNTED OPPOSED BLADE DAMPER