

TOP VIEW

SPECIFICATIONS

- Die cast aluminum construction
- Interchangeable with laminated ConCore® and All Steel panels
- 56% open area without damper
- Panel size: 24 inches square
- Panel weight: 5.06 lb./ft²
- Non-combustible material
- Class A flame spread rating

UNDERSTRUCTURE OPTIONS

- 4' bolted stringer system

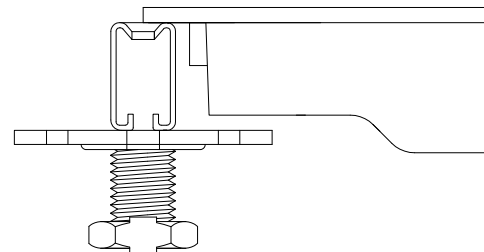
COATING OPTIONS

- Fog Grey anti-static powder coat finish

AIRFLOW CONTROL OPTIONS

- Slide Damper (factory installed)
- Single-zone Opposed Blade Damper (field mounted)

SIDE VIEW



Airflow Performance

| Static Pressure (In. H ₂ O) | Air Volume w/o damper (CFM) |
|--|-----------------------------|
| 0.02 | 1050 |
| 0.04 | 1505 |
| 0.05 | 1700 |
| 0.06 | 1800 |
| 0.08 | 2150 |
| 0.10 | 2340 |

Slide Damper

| Air Volume w/ damper open (CFM) | Air Volume w/damper closed (CFM) |
|---------------------------------|----------------------------------|
| 610 | 50 |
| 685 | 65 |
| 750 | 70 |
| 820 | 80 |
| 1030 | 90 |
| 1170 | 105 |

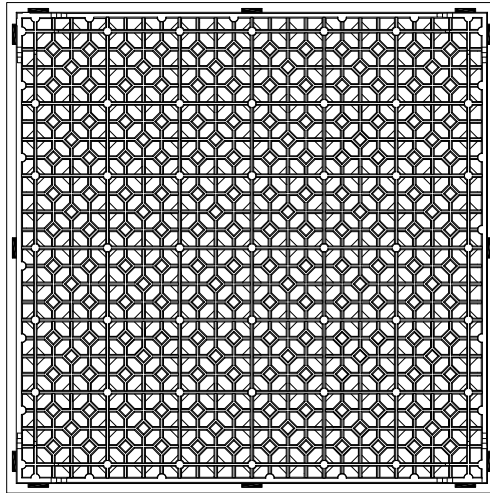
Opposed Blade Damper

| Air Volume w/ damper open (CFM) | Air Volume w/damper closed (CFM) |
|---------------------------------|----------------------------------|
| 880 | 170 |
| 1275 | 185 |
| 1400 | 200 |
| 1610 | 225 |
| 1865 | 260 |
| 2040 | 310 |

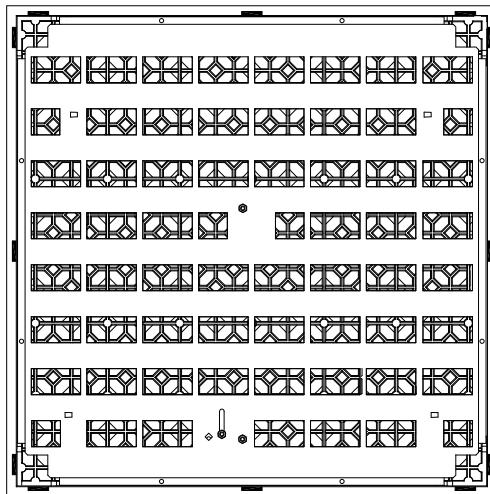
System Load Performance Criteria (Tested on Actual Understructure)*

| System Type | Understructure | SYSTEM WEIGHT | STATIC LOADS | | | ROLLING LOADS | | IMPACT LOADS |
|--------------------|-----------------|---------------------------------|--------------------|--------------------|--------------------------|--------------------|-------------------|------------------|
| | | | Design Loads | Ultimate Load | Safety Factor (min. 2.0) | 10 Passes | 10,000 Passes | |
| Aluminum GrateAire | Bolted Stringer | 6.47 lbs / ft² 31.59 kg / m² | 1000 lbs 454 kg | 2000 lbs 908 kg | Pass | 1000 lbs 454 kg | 800 lbs 363 kg | 100 lbs 45 kg |

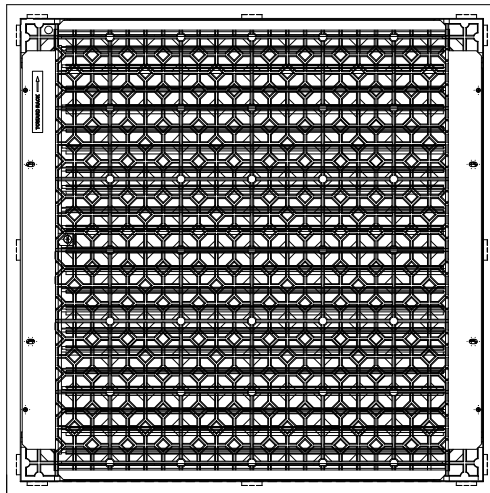
1. System Design Load is based on permanent set $\leq .010"$ and is verified by loading panels in accordance with the CISCA concentrated load method but with panels installed on actual understructure instead of steel blocks. Ultimate, Rolling, and Impact Load tests are performed using CISCA test procedures.
2. Safety Factor is Ultimate Load divided by Design Load.



BOTTOM VIEW



**BOTTOM VIEW WITH OPTIONAL
SLIDE DAMPER**



**BOTTOM VIEW WITH OPTIONAL
OPPOSED BLADE DAMPER**