

TOP VIEW

SPECIFICATIONS

- All steel construction
- Interchangeable with laminated ConCore and All-Steel panels
- 63% open area without damper
- Panel size: 24 inches square
- Panel weight: 12.5 lb./ft²
- Non-combustible material
- Class A frame spread rating
- Patented Bi-Directional air flow design

UNDERSTRUCTURE OPTIONS

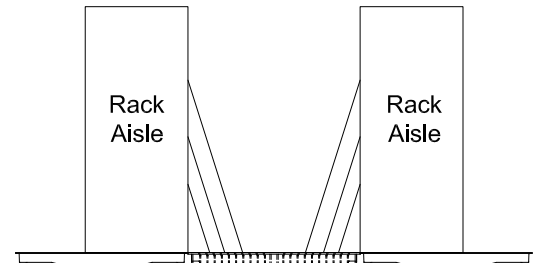
- 4' x .054" Bolted Stringer in a basketweave configuration w/ 8 ga. fillet welded heads

COATING OPTIONS

- Smoke Grey anti-static powder coat finish

AIRFLOW CONTROL OPTIONS

- PowerAire® Quad (field mounted)
- Dual-zone Opposed Blade Damper (field mounted)



Centered Airflow

Panel

PowerAire® Quad

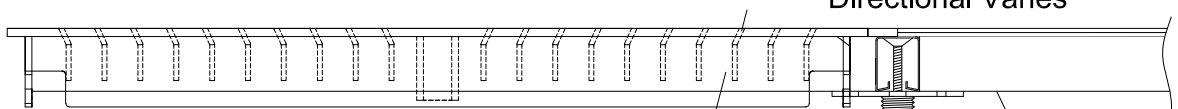
Airflow Performance

Static Pressure (In. H ₂ O)	Air Volume w/o damper (CFM)
0.02	1250
0.04	1765
0.05	1875
0.06	2050
0.08	2470
0.10	2850

Opposed Blade damper

Static Pressure (In. H ₂ O)	Air Volume w/ damper open (CFM)	Air Volume w/ damper closed (CFM)
0.02	1060	70
0.04	1485	95
0.05	1670	105
0.06	1810	115
0.08	2100	120
0.10	2490	130

Pressure (In. H ₂ O)	CFM at 0% Power	CFM at 100% Power
0.02	250	2010
0.04	375	2070
0.05	410	2085
0.06	455	2120
0.08	535	2165
0.10	600	2205



DirectAire X2

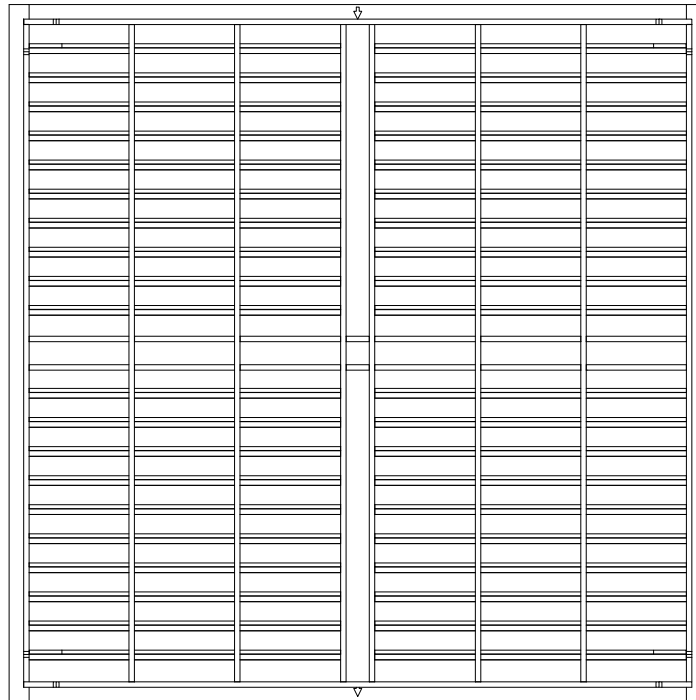
Concore panel

System Load Performance Criteria (Tested on Actual Understructure)

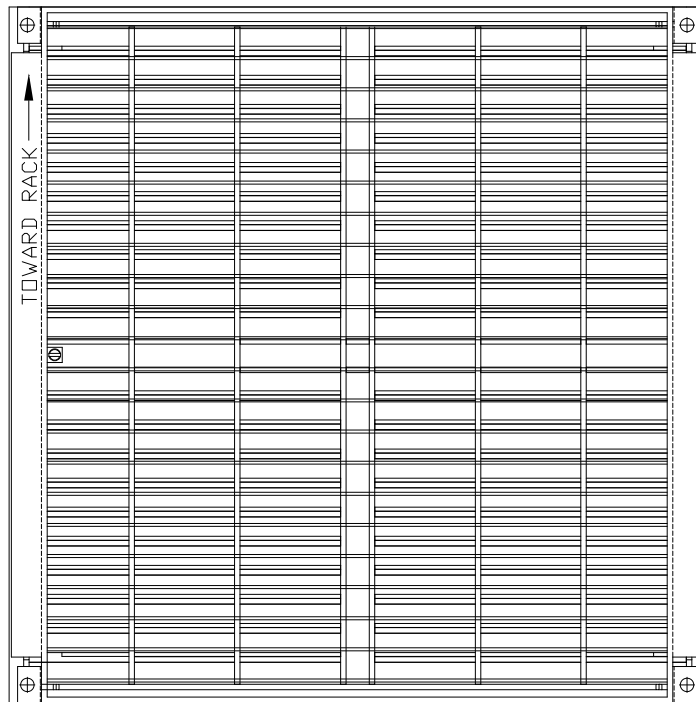
System Type		SYSTEM WEIGHT		STATIC LOADS		ROLLING LOADS		IMPACT LOADS	CAPTURE INDEX
Panel	Understructure	DESIGN LOAD	Safety Factors	Ultimate Load	10 Passes	10,000 Passes			
DirectAire® X2 24"	Bolted Stringer	14.0 lbs / ft²	2500 lbs	Min > 2	5000 lbs	1500 lbs	1500 lbs	200 lbs	92%

1. System Design Load is based on permanent set $\leq 0.010"$ and is verified by loading panels in accordance with the CISC concentrated load method but with panels installed on actual understructure instead of steel blocks. Ultimate, Rolling, and Impact Load tests are performed using CISC test procedures.

2. Safety Factor is Ultimate Load divided by Design Load.



BOTTOM VIEW



**BOTTOM VIEW WITH OPTIONAL
OPPOSED BLADE DAMPER**