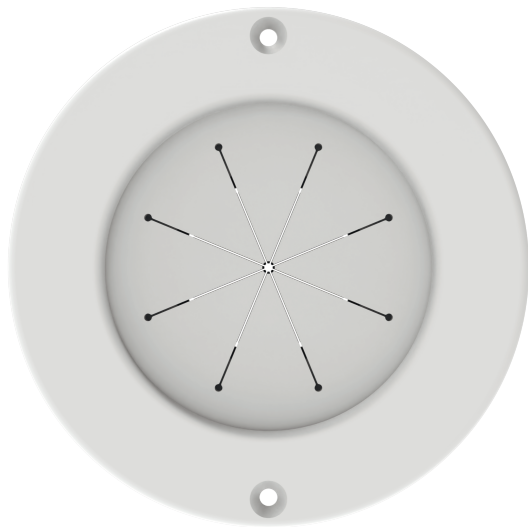
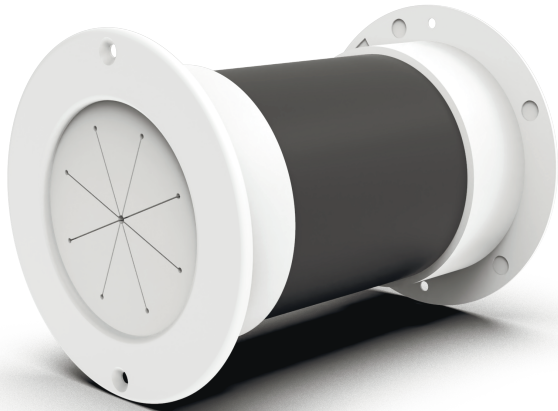


# 4" Wall Pass Through



## FEATURES:

- ❑ Double layered EPDM gasket design interlocks around cables as they are passed through
- ❑ Frame manufactured from high strength flame retardant ABS construction
- ❑ Requires a 4" hole cut
- ❑ Telescopes to fit a variable wall thickness from 4" up to 7"
- ❑ Maximum space for cable passage: 3"
- ❑ Easy peel and stick application with the option to mechanically install using screws
- ❑ EPDM seal keeps cables neatly secured and prevents dirt and debris from passing through

## USES:

- ❑ Hide unsightly cables, pass cables easily and esthetically between spaces
- ❑ Applications include walls ceilings and anywhere wires need to be passed
- ❑ Includes older homes, upgraded smart homes, garages, etc
- ❑ A great option for both new construction and renovated spaces

